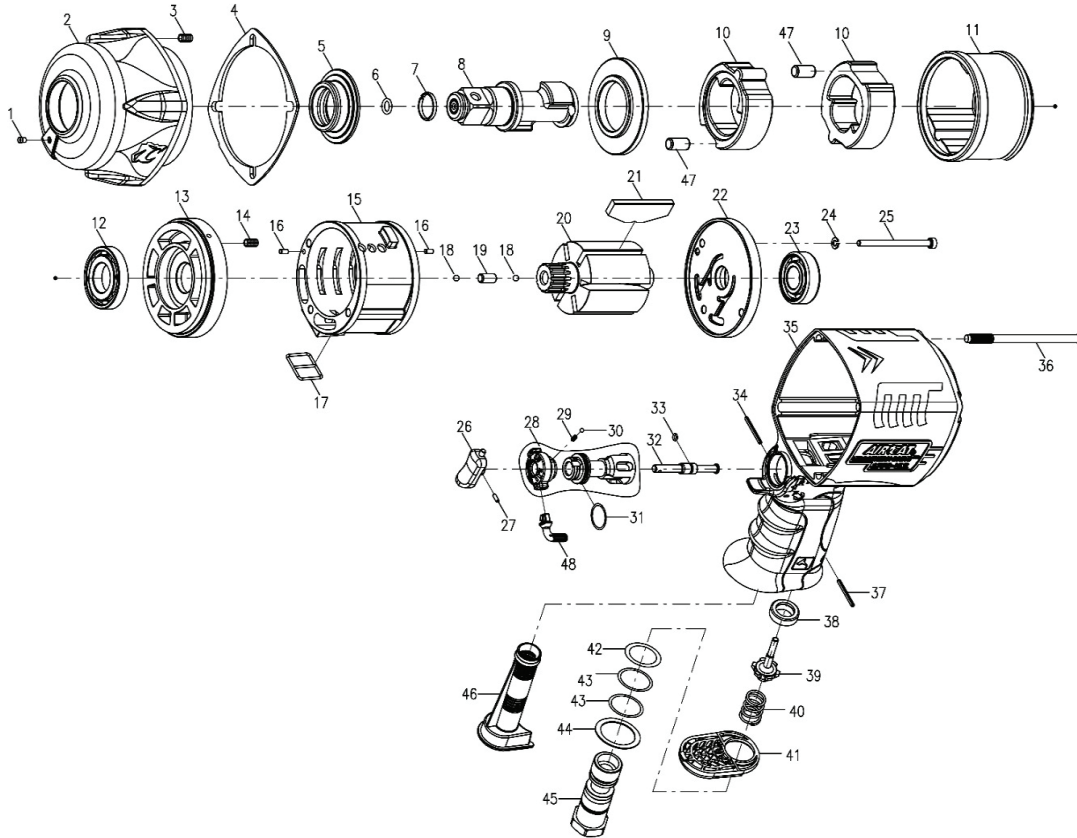


VIBROTHERM

by **AIRCAT** DRIVE™

MODEL: 1778-VXL 3/4" IMPACT WRENCH Exploded View & Parts List



| Ref # | Part Number | Description | Qty |
|-------|-------------|-----------------------|-----|
| 1 | 00-4603 | Grease Fitting (1/8") | 1 |
| 2 | 285Q-002 | Hammer Case | 1 |
| 3 | 00-4314 | Helicoil | 4 |
| 4 | 285Q-020 | Front Gasket | 1 |
| 5 | 285Q-010 | Anvil Bushing | 1 |
| 6 | 00-4122 | O-Ring | 1 |
| 7 | 280-028 | Anvil Collar | 1 |
| 8 | 285Q-011NA4 | Anvil | 1 |
| 9 | 285Q-019 | Hammer Cage Cover | 1 |
| 10 | 285Q-017 | Hammer | 2 |
| 11 | 285Q-012 | Hammer Cage | 1 |
| 12 | 00-2373 | Ball Bearing | 1 |
| 13 | 285Q-005 | Front End Plate | 1 |
| 14 | 00-4301 | Helicoil | 3 |
| 15 | 285Q-006 | Cylinder | 1 |
| 16 | 00-3419 | Pin | 2 |
| 17 | 285B-030 | Square Ring | 1 |
| 18 | 00-3824 | Steel Ball | 2 |
| 19 | 00-3464 | Pin | 1 |
| 20 | 285Q-007 | Rotor | 1 |
| 21 | 278H-008D | Rotor Blade | 6 |
| 22 | 285Q-009 | Rear End Plate | 1 |
| 23 | 00-2304 | Ball Bearing | 1 |
| 24 | 00-1809 | Spring Washer | 3 |
| 25 | 00-0159 | Cap Screw | 3 |
| 26 | 285Q-023 | Trigger | 1 |

| Ref # | Part Number | Description | Qty. |
|-------|-------------|-------------------|------|
| 27 | 00-3325 | Spring Pin | 1 |
| 28 | 285Q-034B | F/R Lever | 1 |
| | 285B-021 | R/F Valve | 1 |
| 29 | 305Y-027 | Spring | 1 |
| 30 | 00-3816 | Steel Ball | 1 |
| 31 | 00-41111 | O-Ring | 1 |
| 32 | 285Q-029 | Trigger pin | 1 |
| 33 | 00-4196 | O-Ring | 1 |
| 34 | 00-3351 | Spring Pin | 1 |
| 35 | 285Q-001 | Motor Housing | 1 |
| 36 | 285Q-028 | Screw | 4 |
| 37 | 00-3306 | Spring Pin | 1 |
| 38 | 306-027-B | Bushing | 1 |
| 39 | 306-026B | Valve Stem | 1 |
| 40 | 305F-026-B | Spring | 1 |
| 41 | 278H-021 | Exhaust Deflector | 1 |
| 42 | 00-4126 | O-Ring | 1 |
| 43 | 00-4143 | O-Ring | 2 |
| 44 | 305F-032 | Washer | 1 |
| 45 | 278F-025A | Air Inlet (BSP) | 1 |
| | 278F-025C | Air Inlet (NPT) | |
| 46 | 278H-019-B | Exhaust Tube | 1 |
| 47 | 0-3482 | Pin | 2 |
| 48 | 243Q-035B | Tab | 1 |